



Government of India  
Ministry of Earth Sciences  
India Meteorological Department



Press Release

Date: 30<sup>th</sup> October, 2024

Time of Issue: 1345 hours IST

**Subject: (i) Heavy Rainfall likely over south Peninsular India during 30<sup>th</sup> October-02<sup>nd</sup> November.**  
**(ii) Above Normal Temperatures over Northwest India likely to continue during next week**  
**(iii) No significant weather likely over remaining parts of the country during next one week.**

**Realised rainfall during past 24 hours till 0830 hours IST of today (Annexure I)**

**Heavy rainfall** at isolated places over Odisha and Tamil Nadu.

**Realised Temperature during past 24 hours till 0830 hours IST of today**

Maximum & Minimum Temperatures were above normal by 3-7°C over Northwest India.

**Weather Systems:**

- ❖ A cyclonic circulation lies over Gulf of Mannar in lower tropospheric levels.
- ❖ Another upper air cyclonic circulation lies over southwest Bay of Bengal off south Andhra Pradesh coast in lower tropospheric levels.

**Forecast & Warnings (upto 7 days) (Annexure II & III):**

- ✓ Light to moderate rainfall at a few places accompanied with isolated thunderstorm and lightning very likely over Kerala & Mahe, Tamil Nadu, Puducherry & Karaikal and Karnataka during 30<sup>th</sup> Oct-02<sup>nd</sup> November; Coastal Andhra Pradesh & Yanam and Telangana on 30<sup>th</sup> October and over Rayalaseema on 30<sup>th</sup> & 31<sup>st</sup> October.
- ✓ **Isolated heavy rainfall** also very likely over Tamil Nadu, Puducherry & Karaikal during 30<sup>th</sup> October-02<sup>nd</sup> November; over Kerala & Mahe during 01<sup>st</sup>-03<sup>rd</sup> November and over South Interior Karnataka on 31<sup>st</sup> October & 01<sup>st</sup> November.
- ✓ The above normal Temperature tendency over Northwest India is likely to continue during next one week. This is attributed to lack of intense Western Disturbance and hence no significant rainfall is likely over Northwest India during the period.

**No significant weather likely over rest parts of the country.**

**For more details, kindly refer National Weather Bulletin:**

[https://mausam.imd.gov.in/responsive/all\\_india\\_forecast\\_bulletin.php](https://mausam.imd.gov.in/responsive/all_india_forecast_bulletin.php)

**For District wise warnings refer:** <https://mausam.imd.gov.in/responsive/districtWiseWarningGIS.php>

**For Fishermen warnings, kindly refer:**

[https://rsmcnewdelhi.imd.gov.in/uploads/archive/51/51\\_bdf575\\_GRAPHIC.png](https://rsmcnewdelhi.imd.gov.in/uploads/archive/51/51_bdf575_GRAPHIC.png)

## ANNEXURE I

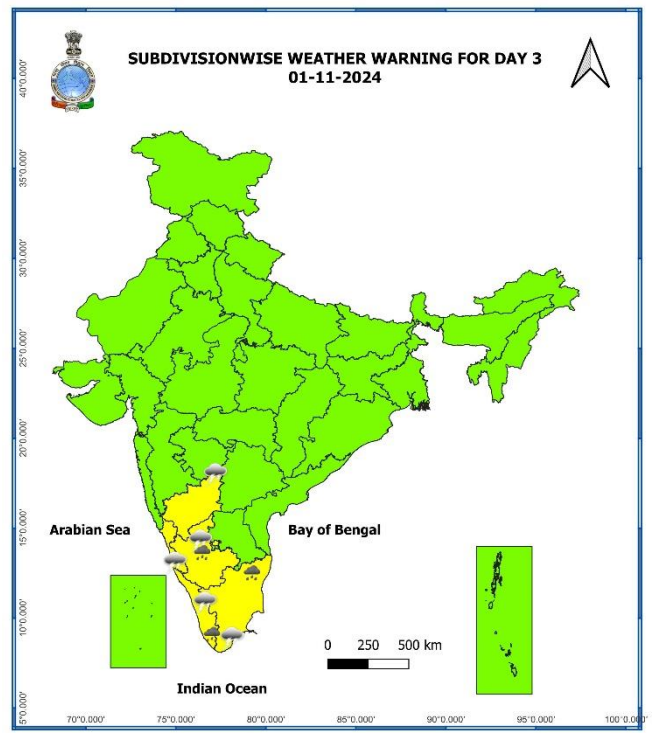
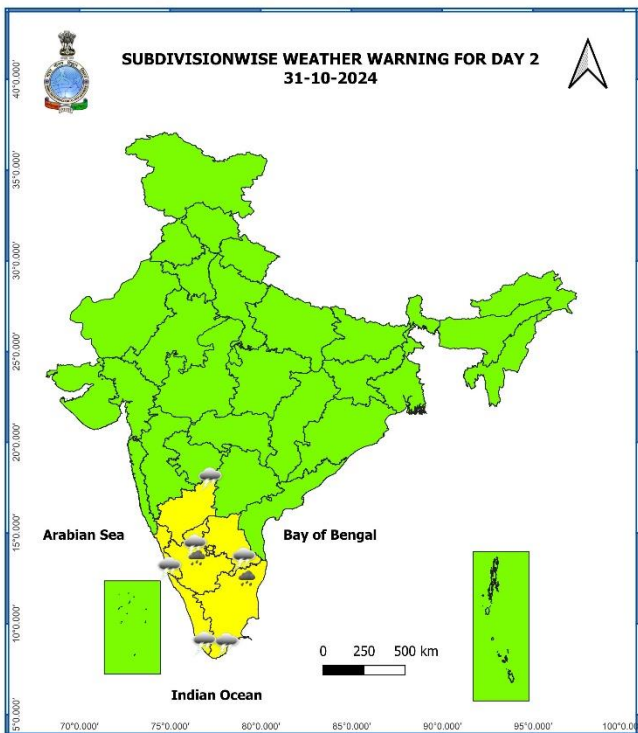
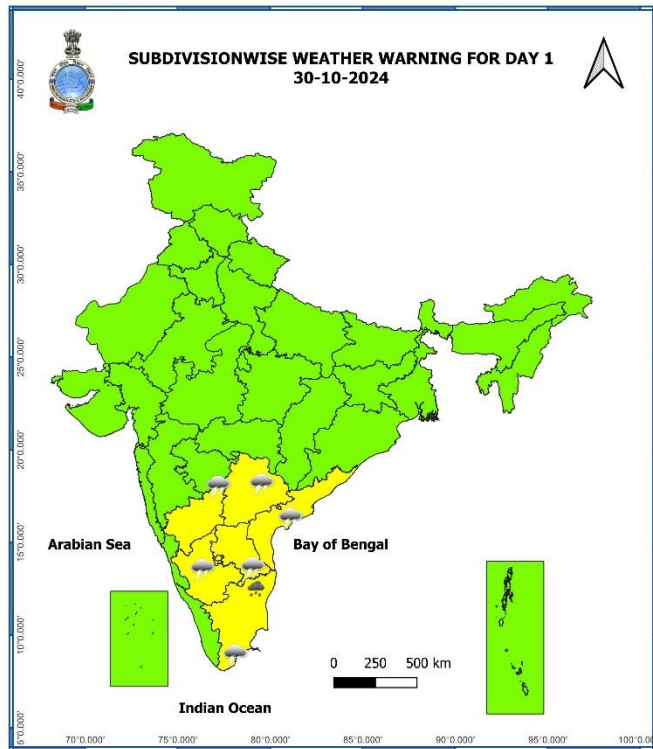
### Significant Rainfall recorded during past 24 hours till 0830 hours IST of today 30.10.2024 (in cm):

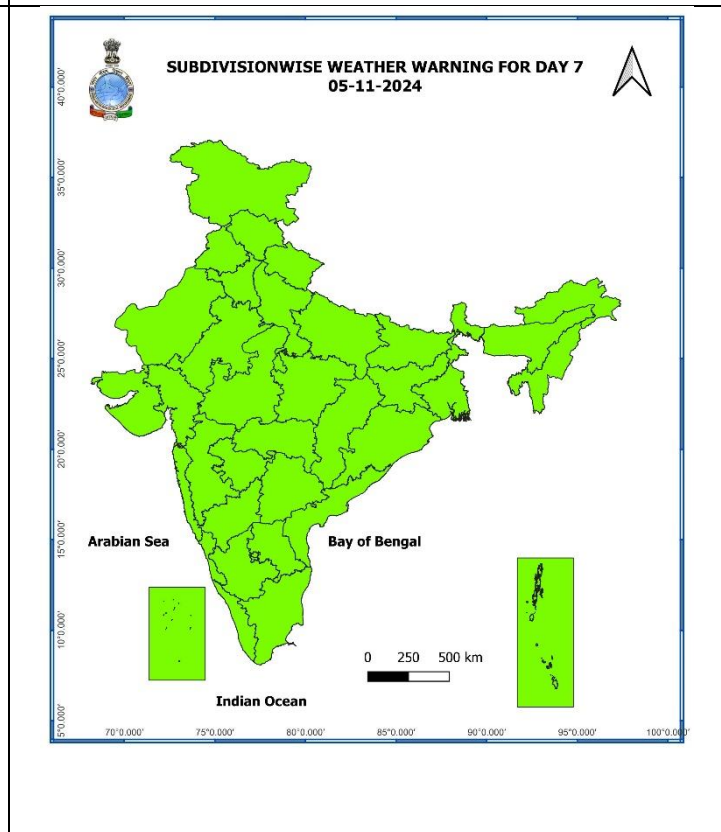
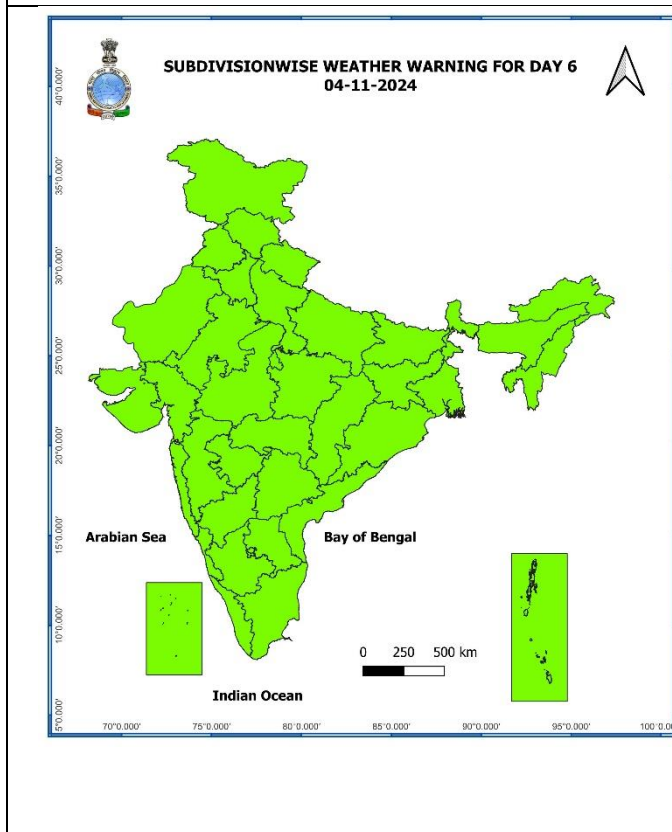
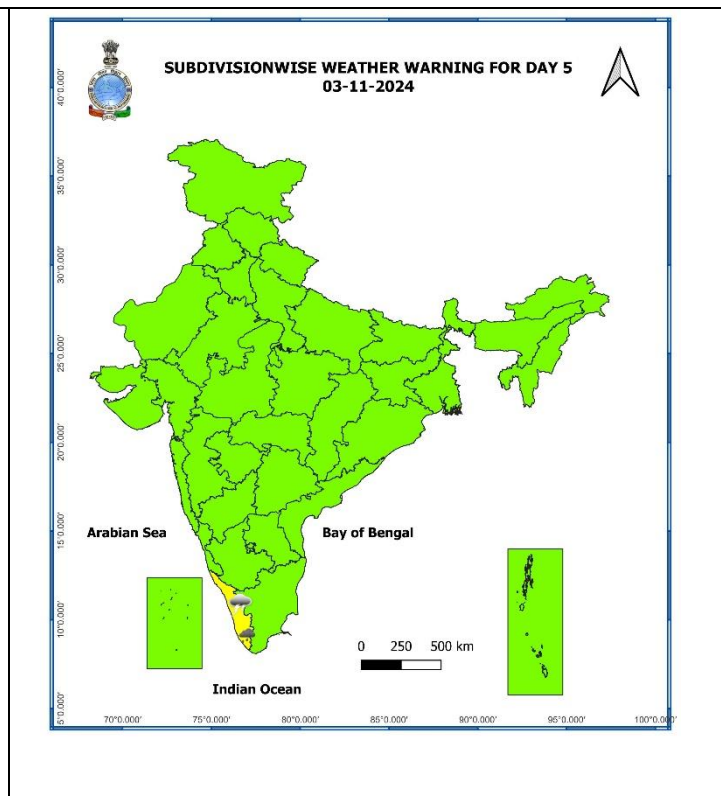
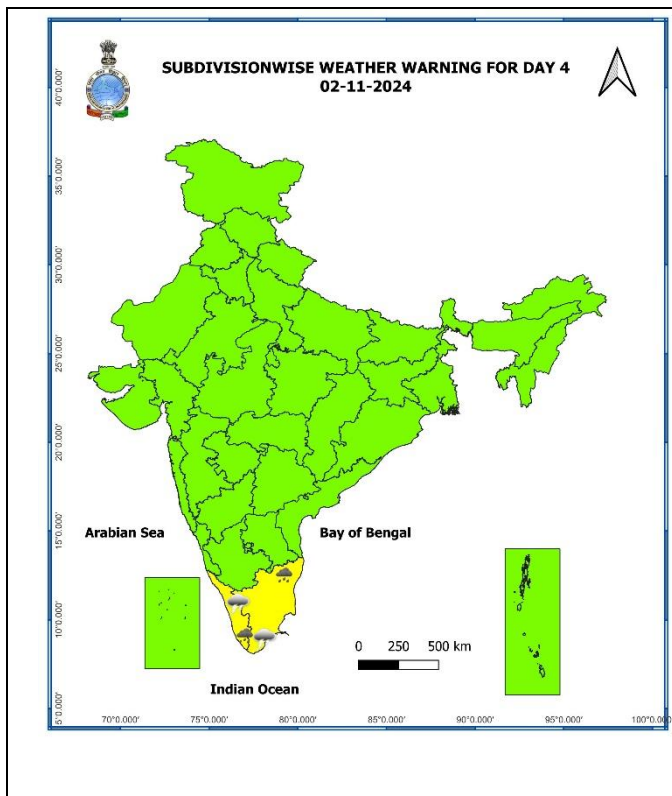
- ❖ **Odisha:** Gunupur (Rayagada) 7, Chitrakunda K Guma (Malkangiri) 5, Lamataput (Koraput) 5, Bhanjnagar (Ganjam) 4, Tikabali (Kandhamal) 4, K Nuagaon (Kandhamal) 3, Nawapara (Nawapara) 2, Bhograi (Balasore) 2, Joshipur (Mayurbhanj) 2, Balikuda (Jagatsinghpur) 2, R.udaigiri (Gajapati) 1, Gumma (Gajapati) 1, Narsinghpur (Cuttack) 1, Chakapad (Kandhamal) 1, Kashinagar (Gajapati) 1, Raruana (Mayurbhanj) 1;
- ❖ **Tamil Nadu, Puducherry & Karaikal:** Vedaranyam (dist Nagapattinam) 7, Vedharanyam AWS (dist Nagapattinam) 5, Ayinkudi (dist Pudukkottai), Gummidipoondi (dist Tiruvallur) 4 each, Ramanathapuram (dist Ramanathapuram), Manalmedu ARG (dist Mayiladuthurai), Manalmedu (dist Mayiladuthurai), K.M.Koil (dist Cuddalore), MGR Nagar (dist Chennai) 2 each, Paramakudi (dist Ramanathapuram), Uthukottai (dist Tiruvallur), Cuddalore Collector Office (dist Cuddalore), Walajabad (dist Kancheepuram), Cuddalore (dist Cuddalore), Lalpet (dist Cuddalore), SRC Kudithangi (dist Cuddalore), Thamaraiykkam (dist Tiruvallur), YMCA Nandnam ARG (dist Chennai), Theerthandathanam (dist Ramanathapuram), Tiruvadana (dist Ramanathapuram), Melalathur (dist Vellore), Upper Bhavani (dist The Nilgiris), Bahour (dist Puducherry), Periya Kalapet (dist Puducherry) 1 each;
- ❖ **Sub-Himalayan West Bengal & Sikkim:** Khanitar (dist Pakyong) 6, Chepan (dist Alipurduar) 5, Nagarkata (dist Jalpaiguri) 5, Majitar (dist Pakyong) 4, Chengmari/diana (dist Jalpaiguri) 4, Namthang (dist Namchi) 3, Alipurduar (pto) (dist Alipurduar) 3, Hasimara (dist Alipurduar) 3, Barobhisha (dist Alipurduar) 2, Buxaduar (dist Alipurduar) 1, Kumargram (dist Alipurduar) 1, Jhallong (dist Kalimpong) 1, Bhutanghat (dist Alipurduar) 1;
- ❖ **Coastal Andhra Pradesh & Yanam:** Visakhapatnam (dist Vishakhapatnam) 5, Nellimarla (dist Vizianagaram) 4, Tuni (dist Kakinada) 3, Vizianagaram (dist Vizianagaram) 2, Kandukur (dist Spsr Nellore) 2, Araku Valley (dist Alluri Sitharamaraju) 1;
- ❖ **Royalaseema:** Kuppam (dist Chittoor) 1, Pulivendla (dist Ysr District) 1, Palamaner (dist Chittoor) 1;
- ❖ **Kerala:** Kochi (dist Ernakulam) 1, Vyttiri (dist Wynad) 1;
- ❖ **Telangana:** Kataram (dist J. Bhupalpally) 1.

## 7 Days Rainfall Forecast

| S. No. | Subdivision                          | 30-Oct | 31-Oct | 01-Nov | 02-Nov | 03-Nov | 04-Nov | 05-Nov |
|--------|--------------------------------------|--------|--------|--------|--------|--------|--------|--------|
|        |                                      | Day 1  | Day 2  | Day 3  | Day 4  | Day 5  | Day 6  | Day 7  |
| 1      | ANDAMAN & NICOBAR ISLANDS            | SCT    | SCT    | SCT    | SCT    | FWS    | FWS    | FWS    |
| 2      | ARUNACHAL PRADESH                    | FWS    | SCT    | SCT    | ISOL   | ISOL   | ISOL   | ISOL   |
| 3      | ASSAM & MEGHALAYA                    | SCT    | SCT    | ISOL   | ISOL   | ISOL   | ISOL   | SCT    |
| 4      | NAGALAND, MANIPUR, MIZORAM & TRIPURA | SCT    | ISOL   | ISOL   | ISOL   | ISOL   | ISOL   | SCT    |
| 5      | SUB-HIMALAYAN WEST BENGAL & SIKKIM   | SCT    | SCT    | ISOL   | ISOL   | ISOL   | ISOL   | ISOL   |
| 6      | GANGETIC WEST BENGAL                 | ISOL   | ISOL   | ISOL   | DRY    | DRY    | DRY    | ISOL   |
| 7      | ODISHA                               | ISOL   | ISOL   | ISOL   | ISOL   | DRY    | DRY    | DRY    |
| 8      | JHARKHAND                            | ISOL   | DRY    | DRY    | DRY    | DRY    | DRY    | DRY    |
| 9      | BIHAR                                | ISOL   | DRY    | DRY    | DRY    | DRY    | DRY    | DRY    |
| 10     | EAST UTTAR PRADESH                   | DRY    | DRY    | DRY    | DRY    | DRY    | DRY    | DRY    |
| 11     | WEST UTTAR PRADESH                   | DRY    | DRY    | DRY    | DRY    | DRY    | DRY    | DRY    |
| 12     | UTTARAKHAND                          | DRY    | DRY    | DRY    | DRY    | DRY    | DRY    | DRY    |
| 13     | HARYANA CHANDIGARH & DELHI           | DRY    | DRY    | DRY    | DRY    | DRY    | DRY    | DRY    |
| 14     | PUNJAB                               | DRY    | DRY    | DRY    | DRY    | DRY    | DRY    | DRY    |
| 15     | HIMACHAL PRADESH                     | DRY    | DRY    | DRY    | DRY    | DRY    | DRY    | DRY    |
| 16     | JAMMU & KASHMIR AND LADAKH           | ISOL   | DRY    | DRY    | DRY    | DRY    | DRY    | DRY    |
| 17     | WEST RAJASTHAN                       | DRY    | DRY    | DRY    | DRY    | DRY    | DRY    | DRY    |
| 18     | EAST RAJASTHAN                       | DRY    | DRY    | DRY    | DRY    | DRY    | DRY    | DRY    |
| 19     | WEST MADHYA PRADESH                  | DRY    | DRY    | DRY    | DRY    | DRY    | DRY    | DRY    |
| 20     | EAST MADHYA PRADESH                  | ISOL   | DRY    | DRY    | DRY    | DRY    | DRY    | DRY    |
| 21     | GUJARAT REGION                       | DRY    | DRY    | DRY    | DRY    | DRY    | DRY    | DRY    |
| 22     | SAURASHTRA & KUTCH                   | DRY    | DRY    | DRY    | DRY    | DRY    | DRY    | DRY    |
| 23     | KONKAN & GOA                         | ISOL   | ISOL   | ISOL   | ISOL   | DRY    | DRY    | DRY    |
| 24     | MADHYA MAHARASHTRA                   | ISOL   | ISOL   | ISOL   | ISOL   | DRY    | DRY    | DRY    |
| 25     | MARATHAWADA                          | ISOL   | ISOL   | ISOL   | ISOL   | DRY    | DRY    | DRY    |
| 26     | VIDARBHA                             | ISOL   | ISOL   | ISOL   | DRY    | DRY    | DRY    | DRY    |
| 27     | CHHATTISGARH                         | ISOL   | ISOL   | ISOL   | ISOL   | ISOL   | DRY    | DRY    |
| 28     | COASTAL ANDHRA PRADESH & YANAM       | ISOL   | ISOL   | ISOL   | ISOL   | ISOL   | ISOL   | ISOL   |
| 29     | TELANGANA                            | SCT    | SCT    | ISOL   | ISOL   | ISOL   | ISOL   | ISOL   |
| 30     | RAYALASEEMA                          | ISOL   | ISOL   | ISOL   | ISOL   | ISOL   | ISOL   | ISOL   |
| 31     | TAMILNADU PUDUCHERRY & KARAIKAL      | ISOL   | SCT    | FWS    | FWS    | SCT    | SCT    | ISOL   |
| 32     | COASTAL KARNATAKA                    | ISOL   | FWS    | SCT    | SCT    | SCT    | ISOL   | ISOL   |
| 33     | NORTH INTERIOR KARNATAKA             | ISOL   | ISOL   | ISOL   | ISOL   | ISOL   | ISOL   | ISOL   |
| 34     | SOUTH INTERIOR KARNATAKA             | SCT    | SCT    | SCT    | SCT    | ISOL   | ISOL   | ISOL   |
| 35     | KERALA & MAHE                        | ISOL   | SCT    | FWS    | WS     | FWS    | FWS    | SCT    |
| 36     | LAKSHADWEEP                          | DRY    | DRY    | SCT    | SCT    | SCT    | SCT    | SCT    |

- As the lead period increases forecast accuracy decreases.





- Action may be taken based on ORANGE AND RED COLOUR warnings.
- Vulnerable regions likely urban and hilly areas action may be initiated for heavy rainfall warning.
- As the lead period increases forecast accuracy decreases.

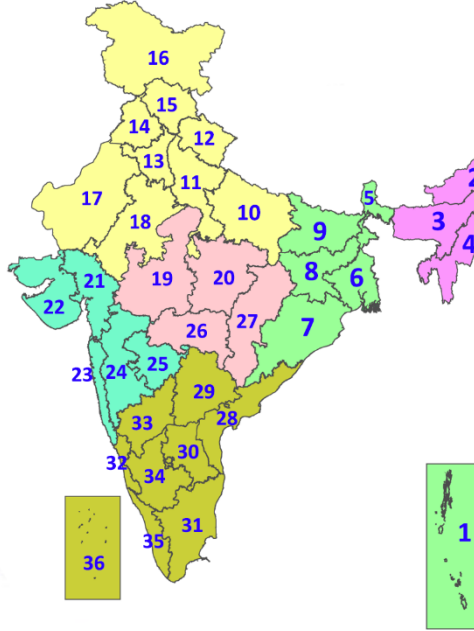


## Legends & abbreviations:

- ❖ **Heavy Rain:**64.5-115.5mm; **Very Heavy Rain:**115.6-204.4mm; **Extremely Heavy Rain:** >204.4mm.
- ❖ **Obsy:** Observatory; **AWS:** Automatic Weather Station; **ARG:** Automatic Rain Gauge; **dist:** District; **NH:** National Highway; **KVK:** Krishi Vigyan Kendra; **DVC:** Damodar Valley Corporation; **PTO:** Part Time Office, **Aero:** Aerodrome, **IAF:** Indian Air Force.
- ❖ **Region wise classification of meteorological Sub-Divisions:**
  - **Northwest India:** Western Himalayan Region (Jammu-Kashmir-Ladakh-Gilgit-Baltistan-Muzaffarabad, Himachal Pradesh and Uttarakhand); Punjab, Haryana-Chandigarh-Delhi; West Uttar Pradesh, East Uttar Pradesh, West Rajasthan and East Rajasthan.
  - **Central India:** West Madhya Pradesh, East Madhya Pradesh, Vidarbha and Chhattisgarh.
  - **East India:** Bihar, Jharkhand, Sub-Himalayan West Bengal & Sikkim; Gangetic West Bengal, Odisha and Andaman & Nicobar Islands.
  - **Northeast India:** Arunachal Pradesh, Assam & Meghalaya and Nagaland, Manipur, Mizoram & Tripura.
  - **West India:** Gujarat Region, Saurashtra & Kutch, Konkan & Goa, Madhya Maharashtra and Marathawada.
  - **South India:** Coastal Andhra Pradesh & Yanam, Telangana, Rayalaseema, Coastal Karnataka, North Interior Karnataka, South Interior Karnataka, Kerala & Mahe, Tamil Nadu, Puducherry & Karaikal and Lakshadweep.

## LEGENDS

1. अंडमान और निकोबार द्वीपसमूह
2. अरुणाचल प्रदेश
3. असम और मेघालय
4. नागालैंड, मणिपुर, मिजोरम और त्रिपुरा
5. उप-हिमालयी पश्चिम बंगाल और सिक्किम
6. गंगीय पश्चिम बंगाल
7. ओडिशा
8. झारखंड
9. बिहार
10. पूर्वी उत्तर प्रदेश
11. पश्चिम उत्तर प्रदेश
12. उत्तराखंड
13. हरियाणा, चंडीगढ़ और दिल्ली
14. पंजाब
15. हिमाचल प्रदेश
16. जम्मू और कश्मीर और लद्दाख
17. पश्चिम राजस्थान
18. पूर्वी राजस्थान
19. पश्चिम मध्य प्रदेश
20. पूर्वी मध्य प्रदेश
21. गुजरात
22. सौराष्ट्र
23. कोंकण और गोवा
24. मध्य महाराष्ट्र
25. मराठवाड़ा
26. विदर्भ
27. छत्तीसगढ़
28. तटीय आंध्र प्रदेश और यनम
29. तेलंगाना
30. रायलसेमा
31. तमिलनाडु, पुडुचेरी और कराईकल
32. तटीय कर्नाटक
33. आंतरिक उत्तरी कर्नाटक
34. आंतरिक दक्षिणी कर्नाटक
35. केरल और माहे
36. लक्षद्वीप



1. Andaman & Nicobar Islands
2. Arunachal Pradesh
3. Assam & Meghalaya
4. Nagaland, Manipur, Mizoram & Tripura
5. Sub-Himalayan West Bengal & Sikkim
6. Gangetic West Bengal
7. Odisha
8. Jharkhand
9. Bihar
10. East Uttar Pradesh
11. West Uttar Pradesh
12. Uttarakhand
13. Haryana, Chandigarh & Delhi
14. Punjab
15. Himachal Pradesh
16. Jammu & Kashmir and Ladakh
17. West Rajasthan
18. East Rajasthan
19. West Madhya Pradesh
20. East Madhya Pradesh
21. Gujarat
22. Saurashtra
23. Konkan & Goa
24. Madhya Maharashtra
25. Marathwada
26. Vidarbha
27. Chhattisgarh
28. Coastal Andhra Pradesh & Yanam
29. Telangana
30. Rayalaseema
31. Tamilnadu, Puducherry & Karaikal
32. Coastal Karnataka
33. North Interior Karnataka
34. South Interior Karnataka
35. Kerala & Mahe
36. Lakshadweep

## SPATIAL DISTRIBUTION (% of Stations reporting)

| % Stations | Category                            | % Stations | Category                     |
|------------|-------------------------------------|------------|------------------------------|
| 76-100     | Widespread (WS/Most Places)         | 26-50      | Scattered (SCT/A Few Places) |
| 51-75      | Fairly Widespread (FWS/Many Places) | 1-25       | Isolated (ISOL)              |

- |                      |                      |              |
|----------------------|----------------------|--------------|
| Fog                  | Heavy Snow           | Cold Wave    |
| Heavy Rain           | Dust Storm           | Cold Day     |
| Very Heavy Rain      | Heat Wave            | Ground Frost |
| Extremely Heavy Rain | Warm Night           |              |
| Thunder & Lightning  | Hot Day              |              |
| Hailstorm            | Hot & Humid          |              |
| Dust Raising Winds   | Strong Surface Winds |              |

### COLOUR CODED WARNING

- No Warning (No Action)
- Watch (Be Aware)
- Alert (Be Prepared To Take Action)
- Warning (Take Action)

### Probabilistic Forecast

| Terms       | Probability of Occurrence (%) |
|-------------|-------------------------------|
| Unlikely    | < 25                          |
| Likely      | 25 - 50                       |
| Very Likely | 50 - 75                       |
| Most Likely | > 75                          |

\* Red colour warning does not mean "Red Alert", Red colour warning means "Take Action".  
Forecast and Warning for any day is valid from 0830 hours IST of day till 0830 hours IST of next day.  
For more details, kindly visit <https://mausam.imd.gov.in> or contact: 011-2434-4599  
(Service to the Nation since 1875)

### DEFINITION/CRITERIA

|                        |  |
|------------------------|--|
| <b>Rain/ Snow *</b>    | <p><b>Heavy:</b> 64.5 to 115.5 mm/cm *</p> <p><b>Very Heavy:</b> 115.6 to 204.4 mm/cm*</p> <p><b>Extremely Heavy:</b> &gt; 204.4 mm/cm *</p>   |
| <b>Heat Wave</b>       | <p><b>When maximum temperature of a station reaches <math>\geq 40^\circ\text{C}</math> for plains and <math>\geq 30^\circ\text{C}</math> for hilly regions</b></p> <p><b>(a) Based on Departure from normal</b></p> <p><b>Heat Wave:</b> Maximum Temperature Departure from normal <math>4.5^\circ\text{C}</math> to <math>6.4^\circ\text{C}</math>.</p> <p><b>Severe Heat Wave:</b> Maximum Temperature Departure from normal <math>\geq 6.5^\circ\text{C}</math></p> <p><b>(b). Based on Actual maximum temperature</b></p> <p><b>Heat Wave:</b> When actual maximum temperature <math>\geq 45^\circ\text{C}</math>.</p> <p><b>Severe Heat Wave:</b> When actual maximum temperature <math>\geq 47^\circ\text{C}</math></p> <p><b>(c). Criteria for heat wave for coastal stations</b></p> <p>When maximum temperature departure is <math>&gt;4.5^\circ\text{C}</math> from normal. Heat Wave may be described provided maximum temperature <math>\geq 37^\circ\text{C}</math></p> |
| <b>Warm Night</b>      | <p><b>When maximum temperature remains <math>40^\circ\text{C}</math></b></p> <p><b>Warm Night:</b> When minimum temperature departure <math>4.5^\circ\text{C}</math> to <math>6.4^\circ\text{C}</math>.</p> <p><b>Severe Warm Night:</b> When minimum temperature departure <math>&gt;6.4^\circ\text{C}</math>.</p>  |
| <b>Cold Wave</b>       | <p><b>When minimum temperature of a station <math>\leq 10^\circ\text{C}</math> for plains and <math>\leq 0^\circ\text{C}</math> for hilly regions.</b></p> <p><b>(a). Based on departure</b></p> <p><b>Cold Wave:</b> Minimum Temperature Departure from normal <math>-4.5^\circ\text{C}</math> to <math>-6.4^\circ\text{C}</math>.</p> <p><b>Severe Cold Wave:</b> Minimum Temperature Departure from normal <math>\leq -6.5^\circ\text{C}</math></p> <p><b>(b) Based on actual Minimum Temperature (for Plains only)</b></p> <p><b>Cold Wave :</b> When Minimum Temperature is <math>\leq 4.0^\circ\text{C}</math></p> <p><b>Severe Cold Wave:</b> When Minimum Temperature is <math>\leq 2.0^\circ\text{C}</math></p> <p><b>(c) For Coastal Stations</b></p> <p>When Minimum Temperature departure is <math>\leq -4.5^\circ\text{C}</math> &amp; actual Minimum Temperature is <math>\leq 15^\circ\text{C}</math></p>   |
| <b>Cold Day</b>        | <p><b>When minimum temperature of a station <math>\leq 10^\circ\text{C}</math> for plains and <math>\leq 0^\circ\text{C}</math> for hilly regions</b></p> <p><b>Based on departure</b></p> <p><b>Cold Day:</b> Maximum Temperature Departure from normal <math>-4.5^\circ\text{C}</math> to <math>-6.4^\circ\text{C}</math>.</p> <p><b>Severe Cold Day:</b> Maximum Temperature Departure from normal <math>\leq -6.5^\circ\text{C}</math></p>   |
| <b>Fog</b>             | <p><b>Phenomenon of small droplets suspended in air and the horizontal visibility <math>&lt; 1\text{km}</math></b></p> <p><b>Moderate Fog:</b> When the visibility between 500-200 metres</p> <p><b>Dense Fog:</b> when the visibility between 50- 200 metres</p> <p><b>Very Dense Fog:</b> when the visibility <math>&lt; 50</math> metres</p>  |
| <b>Thunderstorm</b>    | <p><b>Sudden electrical discharges manifested by a flash of light (Lightning) and a sharp rumbling sound (thunder)</b></p>   |
| <b>Dust/Sand Storm</b> | <p><b>An ensemble of particles of dust or sand energetically lifted to great heights by a strong and turbulent wind.</b></p>   |
| <b>Frost</b>           | <p><b>Ice deposits on ground</b></p> <p>Air temperature <math>\leq 4^\circ\text{C}</math> ( over Plains)</p>   |
| <b>Squall</b>          | <p><b>A strong wind that rises suddenly, lasts for atleast 1 minute.</b></p> <p><b>Moderate:</b> Wind speed 52-61 kmph</p> <p><b>Severe:</b> Wind speed 62-87 kmph</p> <p><b>Very Severe:</b> Wind speed <math>&gt;87</math> kmph</p>  |
| <b>Sea State</b>       | <p><b>Effect of various waves in the sea over specific area</b></p> <p><b>Rough to very rough:</b> Wind speed 41-62 kmph (22-33 knots) &amp; Wave height 2.5-6 metre</p> <p><b>High to very high:</b> Wind speed 63-117 kmph ( 34-63 knots) &amp; Wave height 6-14 metre</p> <p><b>Phenomenal:</b> Wind speed <math>&gt;117</math> kmph (<math>&gt;63</math> knots) &amp; Wave height <math>&gt;14</math> metre</p>  |
| <b>Cyclone</b>         | <p><b>Cyclonic Storm:</b> Wind speed 62-87 kmph (34-47 knots)</p> <p><b>Severe Cyclonic Storm:</b> Wind speed 88-117 kmph (48-63 knots)</p> <p><b>Very Severe Cyclonic Storm:</b> Wind speed 118-165 kmph (64 - 89 knots)</p> <p><b>Extremely Severe Cyclonic Storm:</b> Wind speed 166-220 kmph (90 -119 knots)</p> <p><b>Super Cyclone Strom:</b> Wind speed <math>&gt;220</math> kmph (<math>&gt;119</math> knots)</p>  |

\* Red colour warning does not mean "Red Alert", Red colour warning means "Take Action".  
Forecast and Warning for any day is valid from 0830 hours IST of day till 0830 hours IST of next day.  
For more details, kindly visit <https://mausam.imd.gov.in> or contact: 011-2434-4599  
(Service to the Nation since 1875)